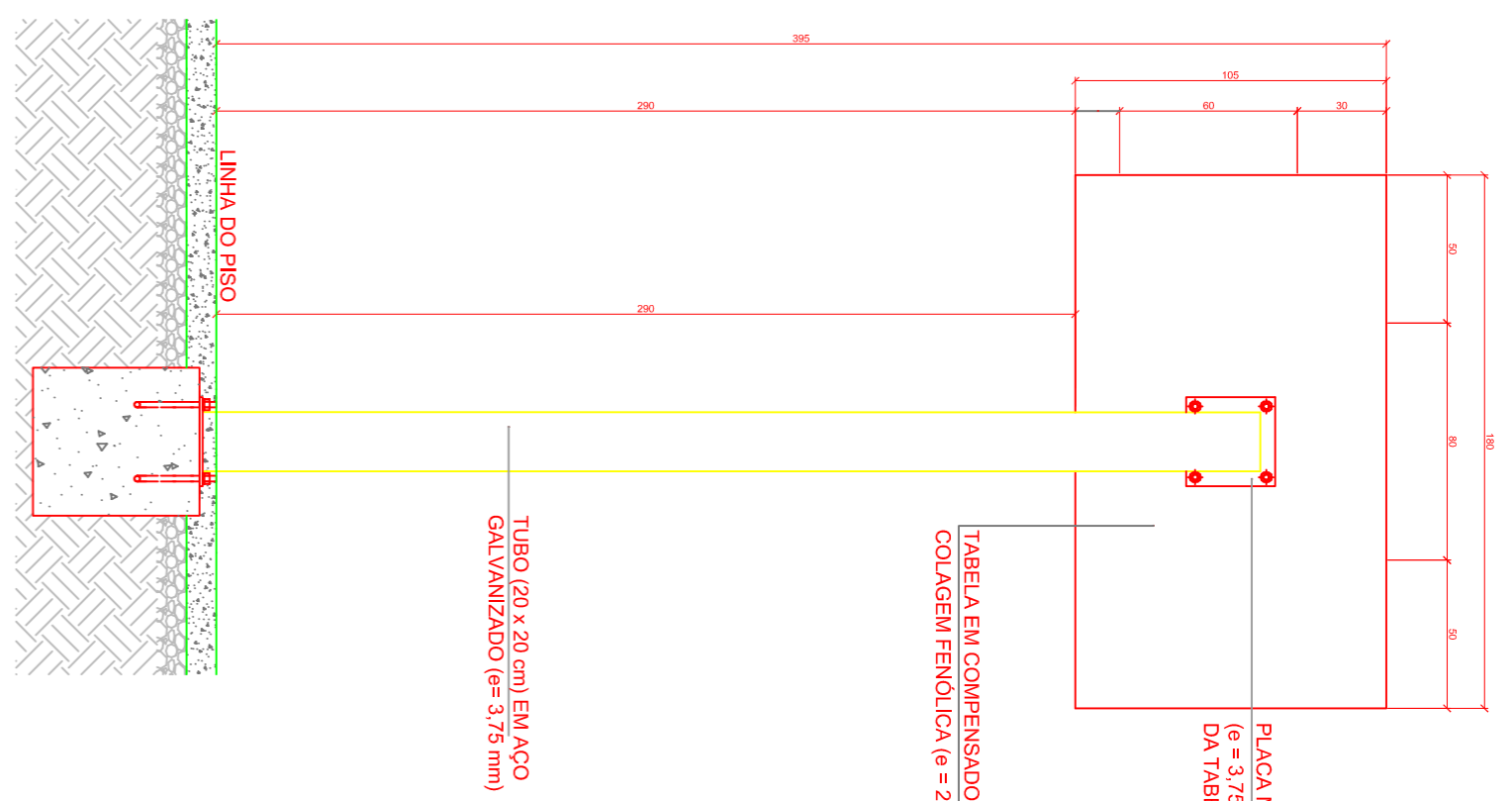
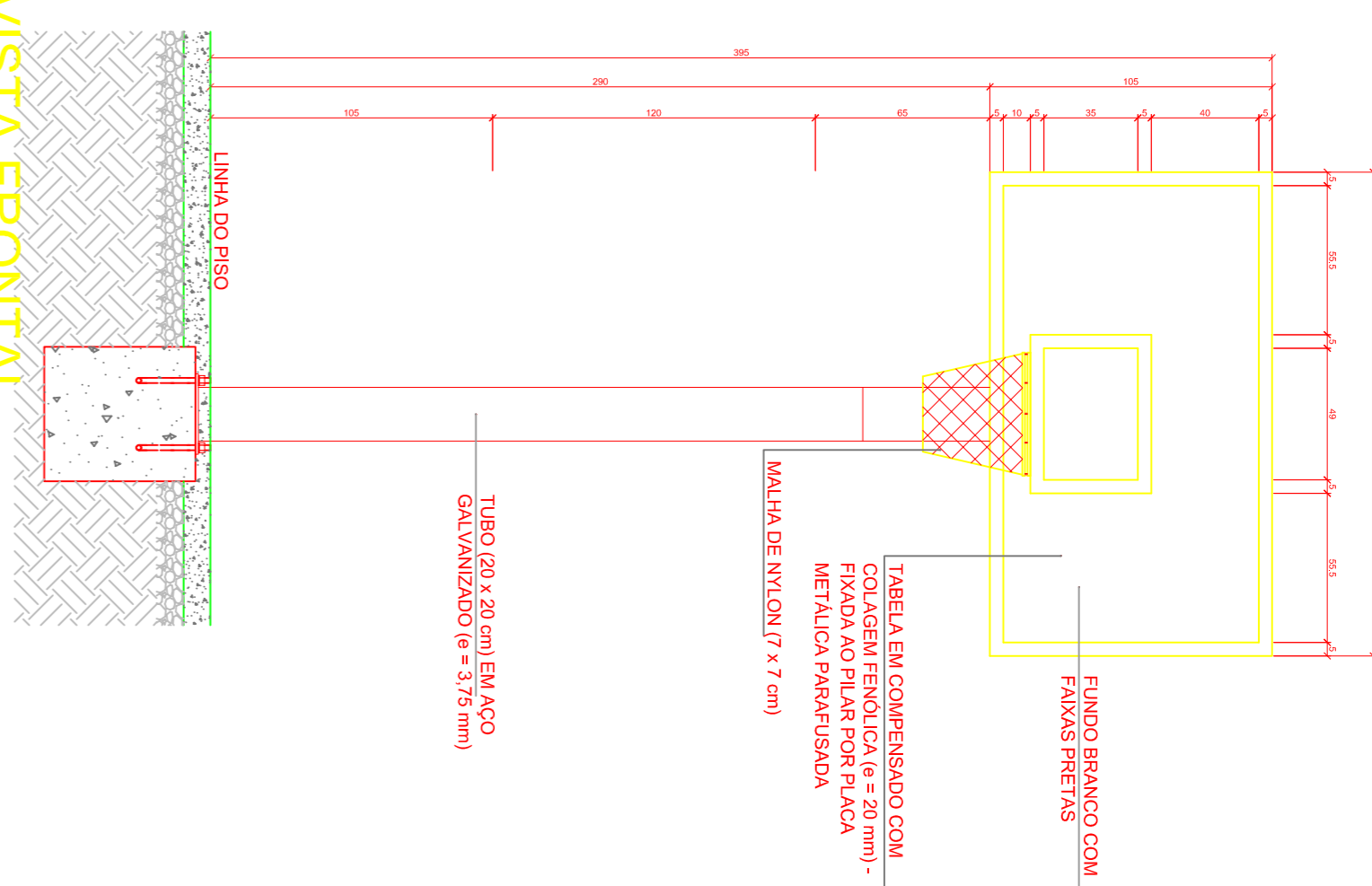


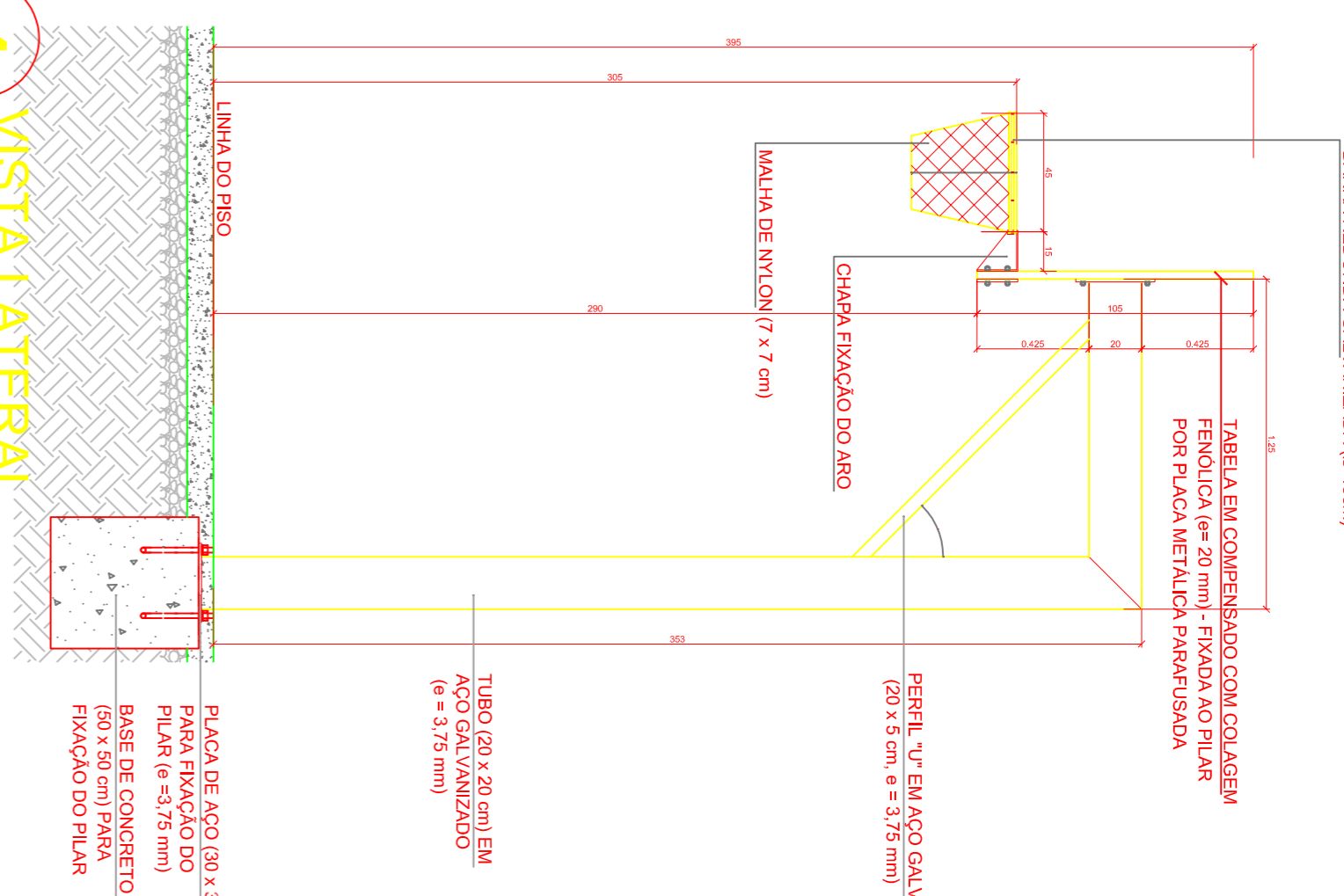
1 VISTA SUPERIOR
ESCALA 1/25



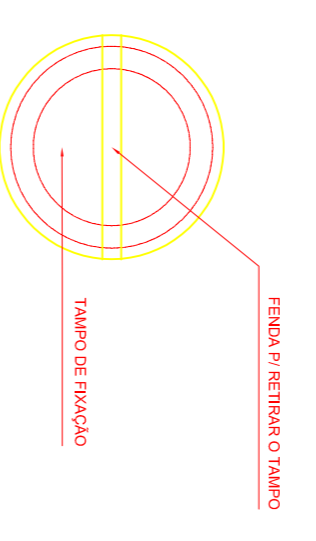
2 VISTA POSTERIOR
ESCALA 1/25



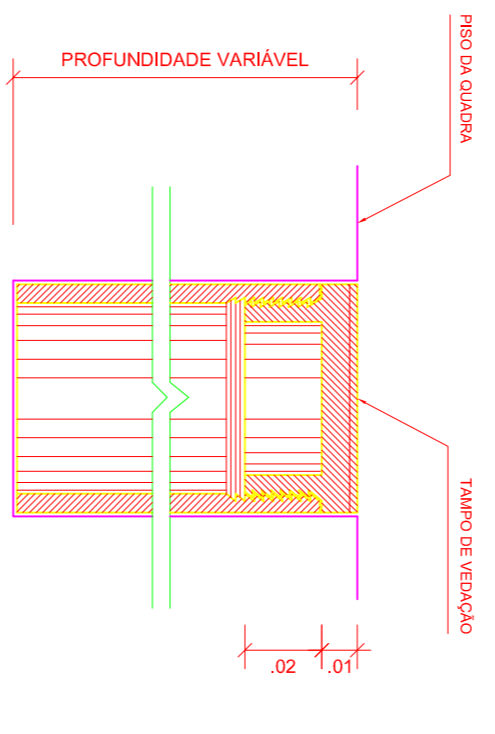
3 VISTA FRONTAL
ESCALA 1/25



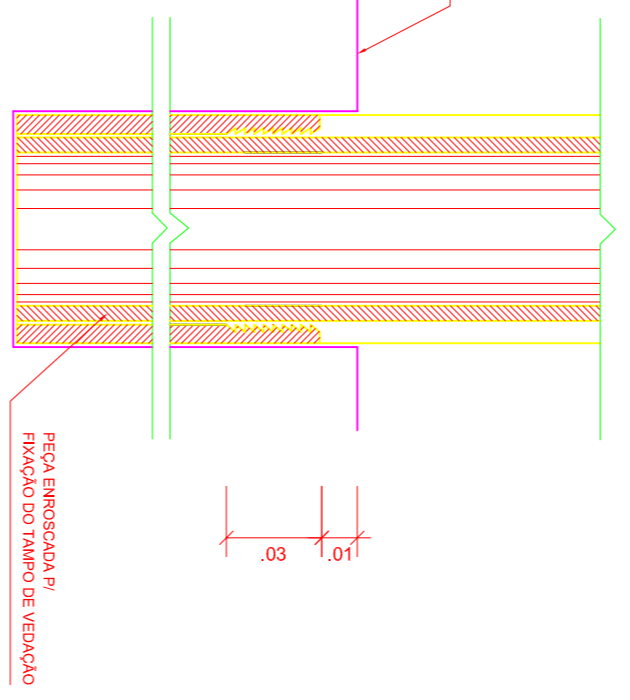
4 VISTA LATERAL
ESCALA 1/25



DETALHE D1
VISTA SUPERIOR
ESCALA 1:2

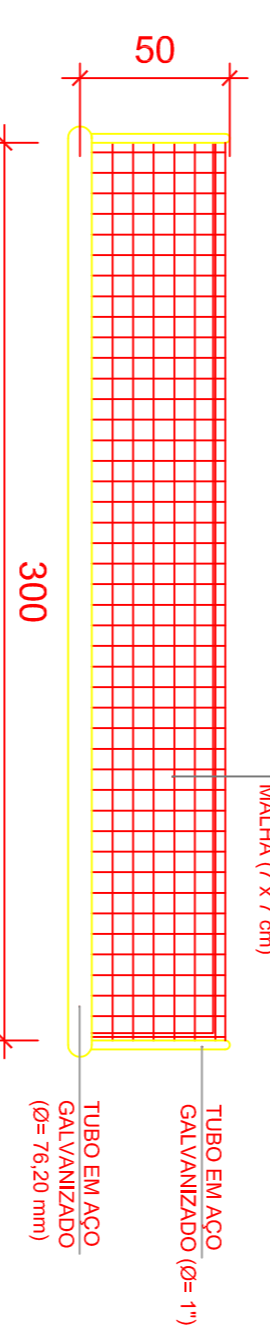


DETALHE D1
BUCHA C/ TAMPO
ESCALA 1:2

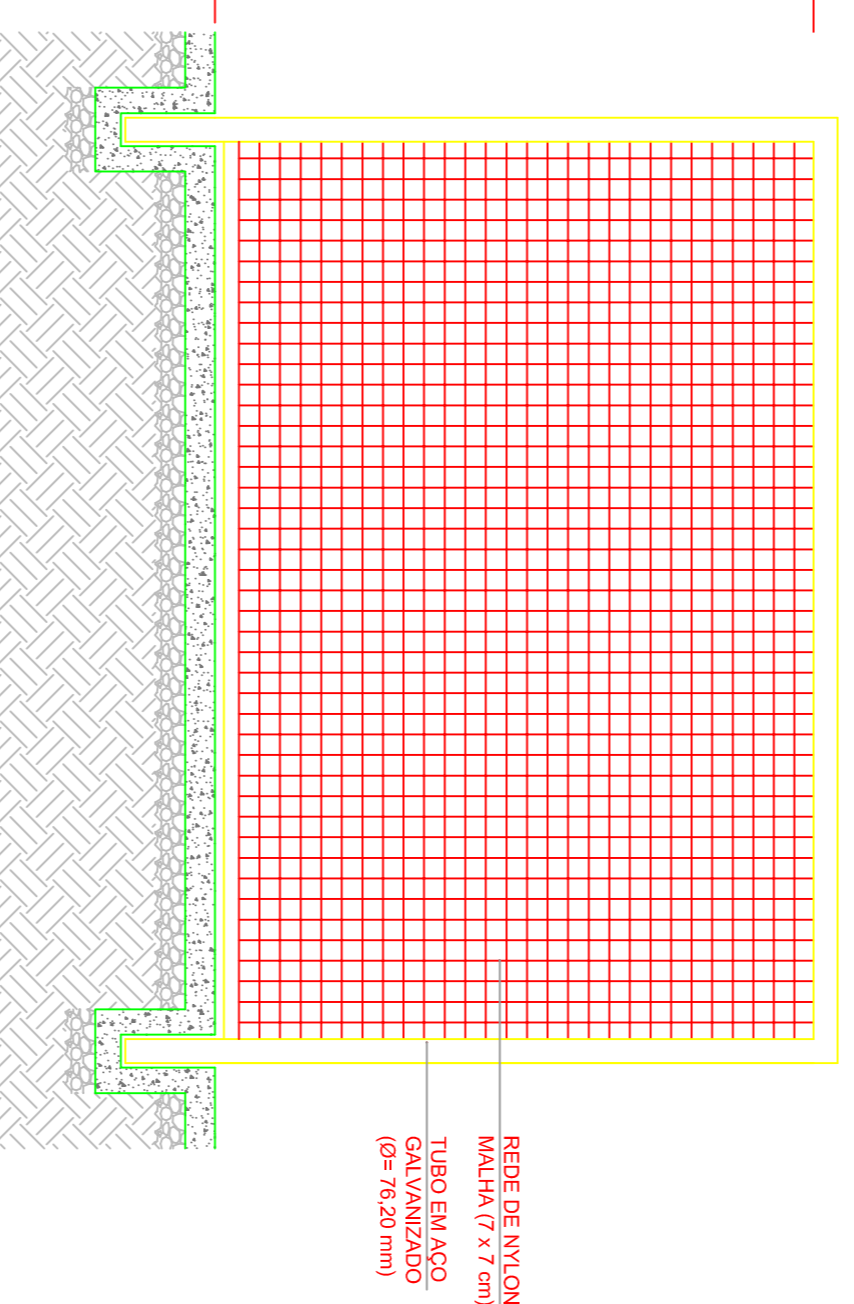


DETALHE D1
BUCHA C/ ELEMENTO
ESCALA 1:2

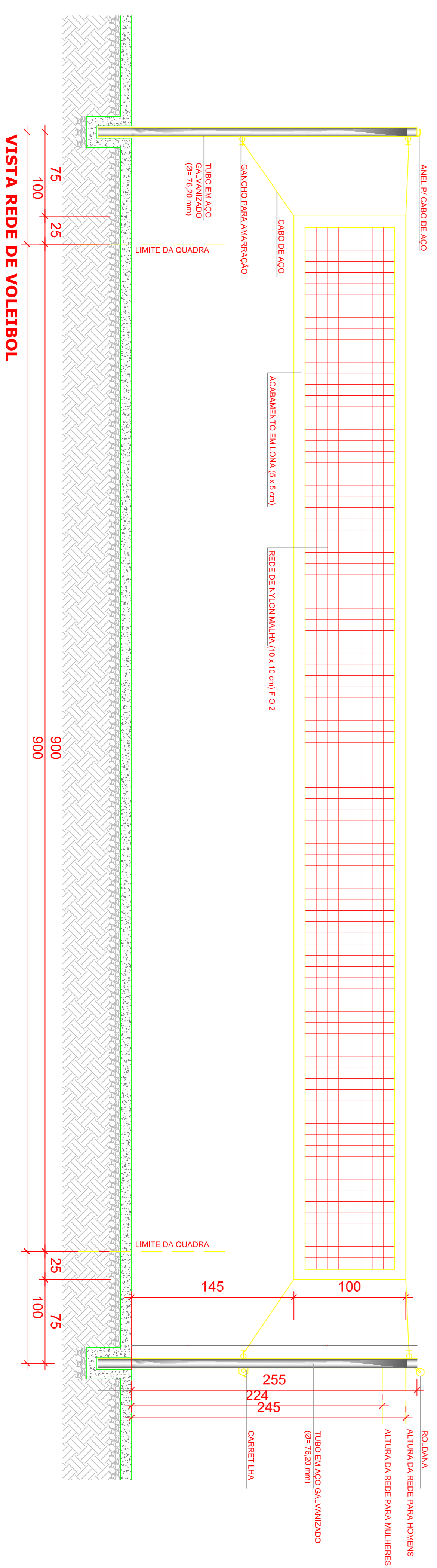
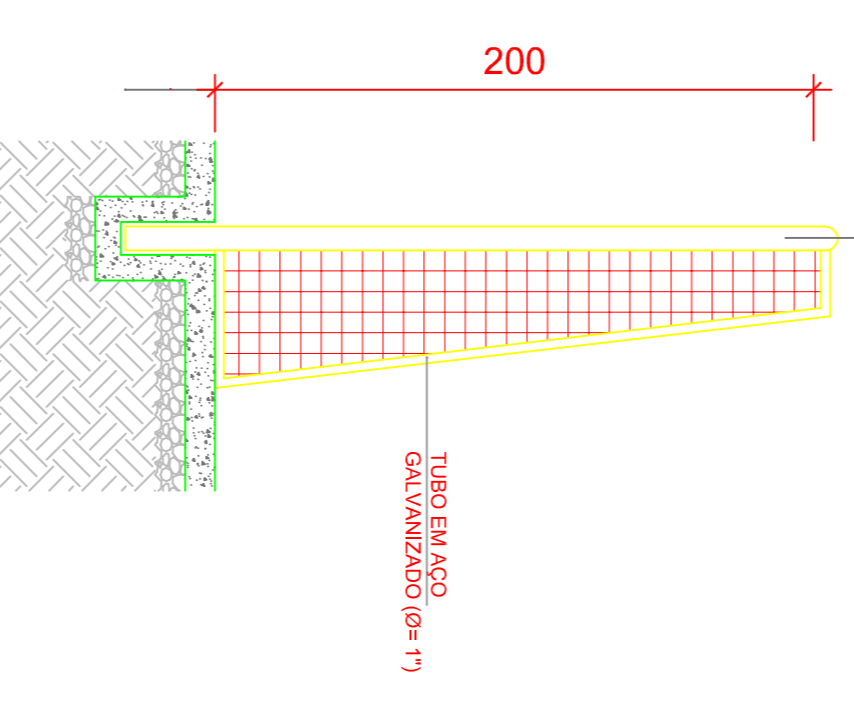
BALISA FUTEBOL
PLANTA
ESCALA 1:25



BALISA FUTEBOL
VISTA FRONTAL
ESCALA 1:25



BALISA FUTEBOL
VISTA LATERAL
ESCALA 1:25



VISTA REDE DE VOLEIBOL
ESCALA 1:25



PREFEITURA MUNICIPAL
São João da Ponte
PROJETO ARQUITETÔNICO GINÁSIO POLIESPORTIVO
DISTRITO DE SANTO ANTÔNIO DA BOA VISTA
MUNICÍPIO - UF: SÃO JOÃO DA PONTE - MG
PROPRIETÁRIO: MUNICÍPIO DE SÃO JOÃO DA PONTE
ENDEREÇO: COMUNIDADE DE SANTO ANTONIO DA BOA VISTA

PROPRIETÁRIO/PREFEITURA DE SÃO JOÃO DA PONTE
ENGENHEIRO CIVIL ALISSON GUSMÃO CORDEIRO GREA- 167.936/D

PROJETO ARQUITETONICO	ESCALA:	ARQ
		FRANCHA
		04/04